

# LARGE DEPTH OF FIELD 3D MEASURING MICROSCOPE

## CODE 5324-K210

AUTO FOCUS

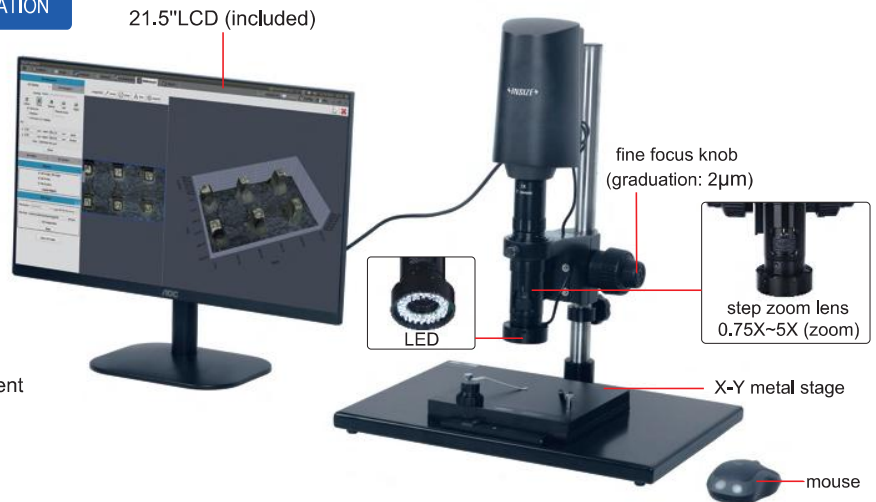
BUILT-IN SOFTWARE  
WITHOUT COMPUTER

ROTATABLE  
OBSERVATION

STEREOSCOPIC  
3D IMAGING

PLANE MEASUREMENT AND  
PROFILE HEIGHT MEASUREMENT

- Auto focus camera
- Built-in motor, automatic focus stacking
- PDF report can be exported
- Fast generation of large depth of field images
- Plane measurement and profile height measurement



### SPECIFICATION

Sensor	1/2" CMOS
Pixel	2M
Resolution	1920×1080
Magnification	100~750X
Z-axis measurement range	2mm
View field	0.6×0.32~4.5×2.5mm
Working distance	30~40mm
Frame rate	60fps
Plane measuring accuracy	±8μm
Output	HDMI/LAN
Power supply	power adapter
Dimension (L×W×H)	570×300×430mm
Weight	10kg

### STANDARD DELIVERY

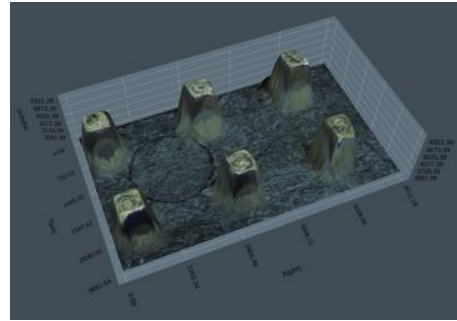
Main unit	1 pc
X-Y metal stage	1 pc
Mouse	1 pc
Keyboard	1 pc
Power adapter	3 pc
Glass calibration rule	1 pc
Calibration block	1 set
16G USB flash disk	1 pc

### PROFILE HEIGHT MEASUREMENT ACCURACY

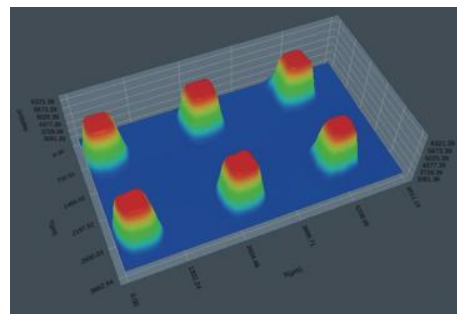
Objective magnification	Measuring range	Measuring accuracy
1.5X	2000μm	±20μm
2X	1200μm	±10μm
2.5X	800μm	±10μm
3X	600μm	±6μm
3.5X	400μm	±5μm
4X	320μm	±5μm
4.5X	250μm	±5μm
5X	200μm	±3μm

\* Measurement of profile height at 0.75X and 1X is not recommended

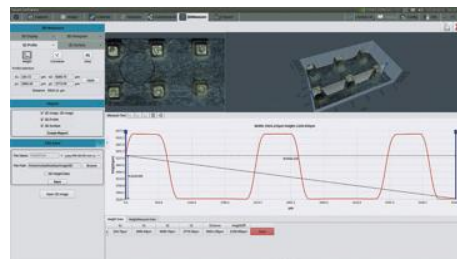
### SOFTWARE (INCLUDED)



constructing stereoscopic 3D imaging that can be dragged and rotated for viewing



the chromatogram height clearly shows the difference in three-dimensional height



fast measurement of profile height difference